

Orchids & Onions

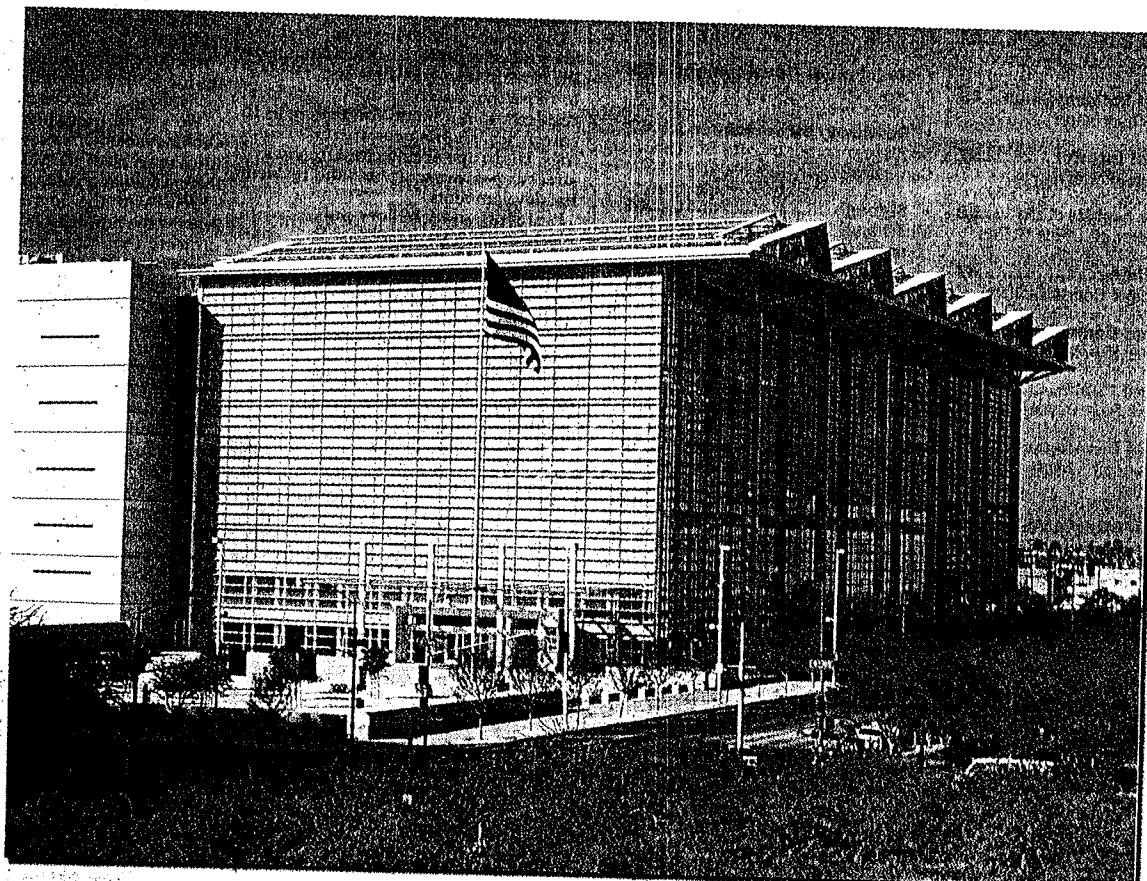


PHOTO COURTESY OF BOB RINK

BY ANNE ROBERTSON
THE BUSINESS JOURNAL

When you can't decide if you love it or hate it, just give it both honors — which is what the Owards does with its annual

Love/Hate category.

This year's dubious honor went to the Federal Courthouse in downtown Phoenix. The structure is among a variety of projects completed this year and one that also drew a litany of both applause and "boos" from voters, according to Mo Stein, president of Phoenix architectural firm The Stein-Cox Group, and Owards chairman.

"It's a pretty obvious building," he said. "What some people liked about the site is its incredible use of space and dramatic look; it's not just a monolith."

"What others didn't like is the white color and so much glazing, as well as the development around the site," he said.

Richard Meier served as the project's design architect and worked in a partnership with Langdon Wilson Architecture Planning Interiors, a Phoenix firm, to execute the plans. The project's contractor was Dan Withers of D.L. Withers Construction Inc., Phoenix.

Every year the Owards committee looks

at the nominated projects that receive the largest number of both Orchids and Onions.

"When you do a project that's this significant, you should get that kind of mixed opinion," he said. "The fact that you can cause emotion with a project is important."

Last year, the Love/Hate Oward went to Tempe Town Lake, which Stein said some respondents thought was great, while others called it a "big puddle." Also handed the distinction in recent years: the Phoenix Public Library.

"Paul Johnson, the former mayor, said he liked it because it reminded him of a toaster," he said.

The Owards have revealed that many significant projects do not cause emotion one way or the other. Bank One Ballpark, for example, has drawn "no more than two" responses since being built, he said.

Indeed, the committee has never had a problem finding the Love/Hate winner each year. Stein said there always has been a "standout" candidate that receives an "overwhelming" amount of nominations. The category, in a sense, created itself.

"When we started the Owards, we never planned for it," Stein said. "We never thought we'd get a project every year for both an Orchid and Onion."

The new Sandra Day O'Connor Federal Building and U.S. Courthouse in Downtown Phoenix was given the Love/Hate Oward.



Love/Hate



Oward

Sandra Day O'Connor Federal Building and U.S. Courthouse

401 W. WASHINGTON ST., PHOENIX

Phoenix's new 571,078-square-foot federal building and United States courthouse held an \$84 million price tag. It was dedicated Oct. 23 with Justice Sandra Day O'Connor.

LOVE COMMENTS:

- "Breathtaking external beauty."
- "Clean lines, bright, beautiful architecture."
- "This represents what a public building should look like"

HATE COMMENTS:

- "This is architecture for artitec's sake. No one else would appreciate it."
- "Out of context."
- "Is this what we want Arizona to look like."

The
Business Journal

**OWARDS
2000**

2000 JURY

Randy Allen, Steelcase Inc.
Jeff Anderson, Landscape Architect, Cornoyer-Hedrick
Tom Awai, Architekton
Ralph Backhaus, ASU
Marc Beyer, Design Workshop
Bob Coons, Encanto Village Planning Committee
Dick Mettee, Stanley Consultants Inc.
Martin Umberger, Architect & Landscape Architect
Cinda Wilford, Wells Fargo
Bob Wood, Scottsdale Urban Design Studio, planner
Facilitators: Katherine Emery, City of Glendale
 Molly Hood, City of Glendale
 Debby Schneider, Schneider-Yates & Associates

Onion
 Oward 

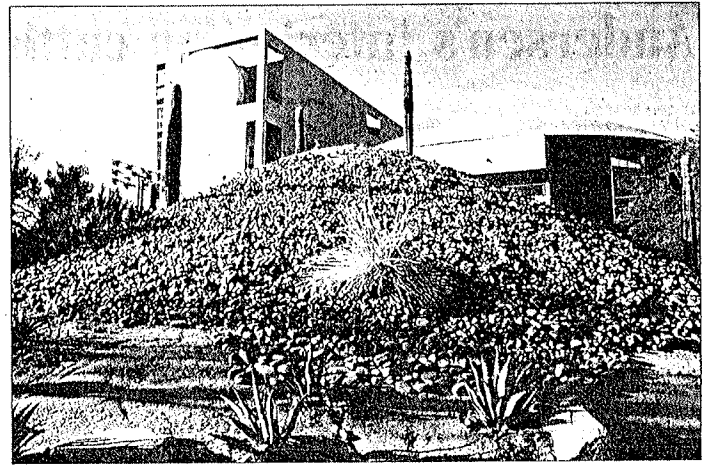
Landscape Architecture
 ROCK PILE AT ARIZONA STATE UNIVERSITY LAW LIBRARY

This pile of rocks outside the ASU Law Library was created from the excavation during construction of the building.

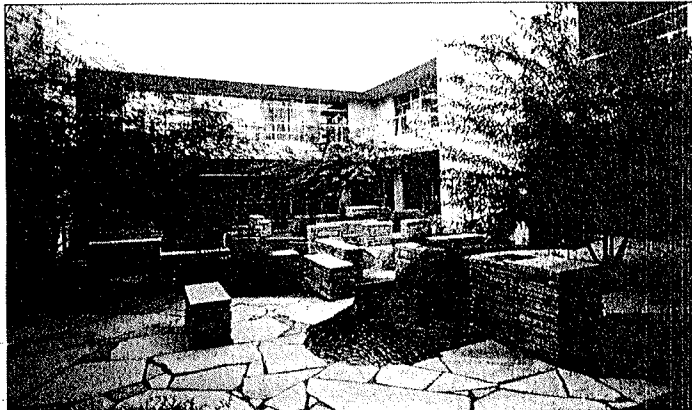
Rather than haul the dirt away, it was covered with river rock and adorned with a saguaro cactus.

JUDGES' COMMENTS:

- "Dirt pile from excavation from building left at sight and covered with river rock with cactus at top."
- "Pretty austere."
- "This looks like a rock cupcake with saguaro candles on top."



This mound of excavation dirt dressed up as landscaping sits outside ASU Law Library.



Scottsdale Signature Office Suites was honored for this courtyard.

Orchid
 Oward 

Landscape Architecture
 SCOTTSDALE SIGNATURE OFFICE SUITES

This complex of office suites at 8585 E. Hartford Drive, Scottsdale, were honored for the landscape architecture of the courtyard.

The architect was DFD Architecture and the contractor was DPR Construction, Inc.

They are owned by Scottsdale Signature Office Suites, LLC

JUDGES' COMMENTS:

- "Created different spaces in courtyard."
- "Old-fashioned garden design."
- "Creative micro-climate."
- "Nice design statement."
- "Above and beyond city ordinance of Scottsdale."
- "Delicate use of water we can relate to."
- "Obviously a lot of thought went into this design."
- "Very sensitive human scale that we can relate to."
- "Very intimate space."

C O N S T R U C T I O N
 IS

MOTHER NATURE

MAINTAIN THE CRITICAL PATH of your construction project by using professional builders with the ability to recover from adversity while exceeding your expectations.



D.L. WITHERS
CONSTRUCTION, L.C.
 Construction Manager/ General Contractor
 License #131580 602-438-9500